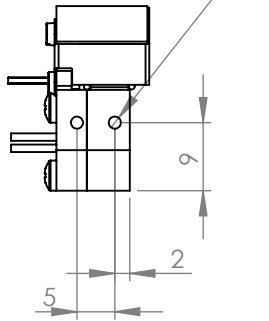
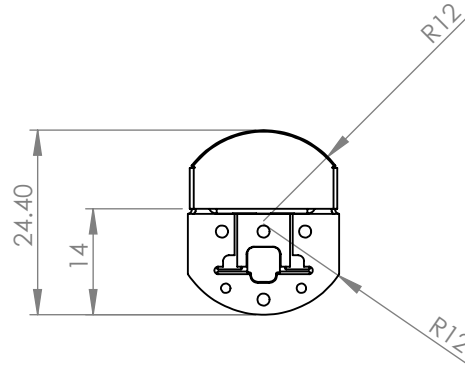


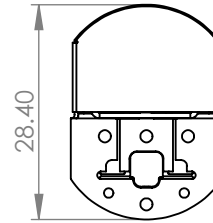
MOUNTING HOLES
4x M2 ∇ 2.50
USE COMPLIANT HOLDER
OR ONE SIDE ONLY



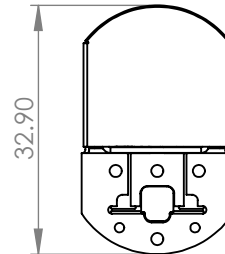
CS100



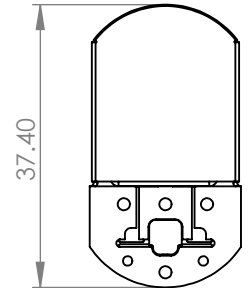
CS110



CS120



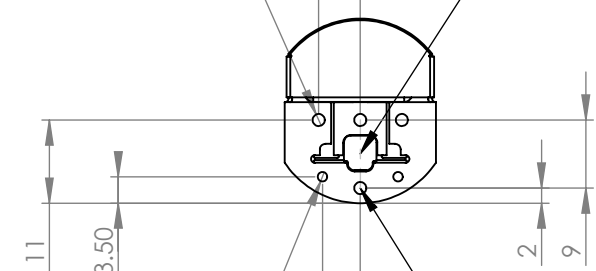
CS130



TOP SURFACE HOLE LAYOUT

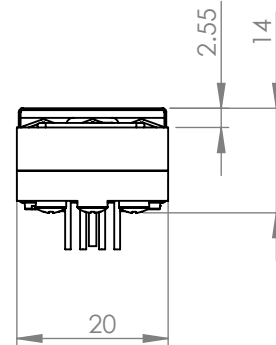
ACCESSORY HOLE
2x M2 ∇ 4

5.50 SAMPLE CENTER



ACCESSORY HOLE
2x \varnothing M1.6 ∇ 4

5 SAMPLE MOUNTING HOLES
2x M2 ∇ 4



ALL VARIANTS FIT VERTICALLY IN 1" BORE. FOR HORIZONTAL MOUNTING BORE SHOULD BE AT LEAST 1MM LARGER THAN CELL LENGTH

3D MODELS ARE AVAILABLE. CONTACT RAZORBILL INSTRUMENTS

SAMPLE AND SAMPLE PLATES NOT SHOWN

DO NOT USE SCREWS LONGER THAN INDICATED OR CELL MAY BE DAMAGED



THIRD ANGLE

RAZORBILL INSTRUMENTS

PHONE: 0131 258 4329

EMAIL: info@razorbillinstruments.com

TITLE:

CS1x0 CUSTOMER DRAWING

VERSION:

4

DATE:

2022-11-30

DWG NO.

CS1x0_CSTM

MATERIAL:

N/A (ASSEMBLY)

SHEET 1 OF 1

SCALE:2:1 PRINT ON A4
DO NOT SCALE DRAWING